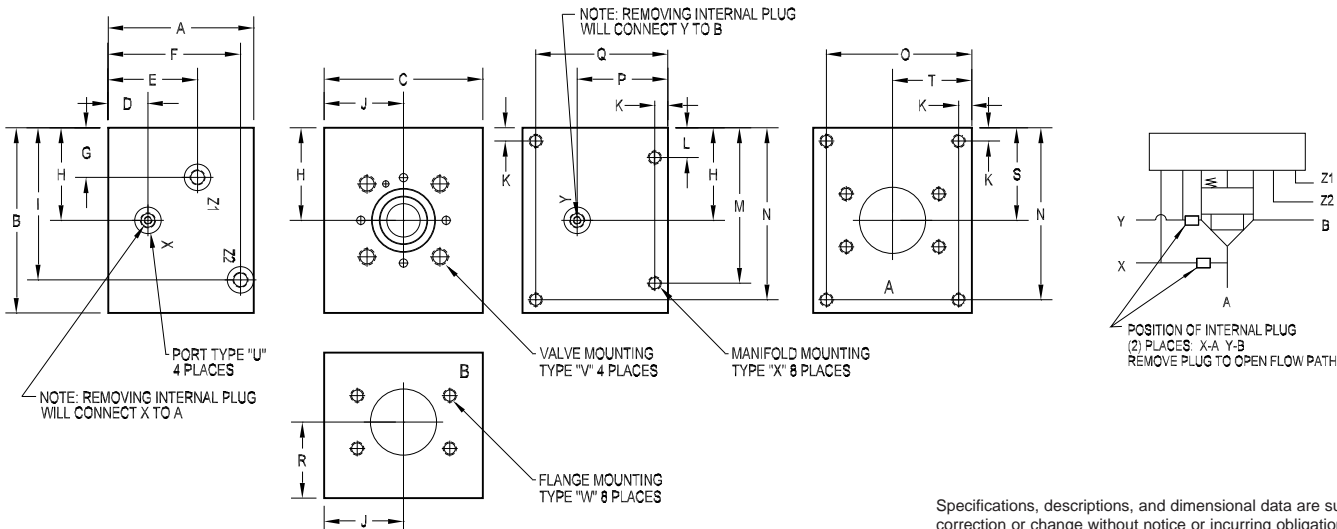




32mm Body • XA Circuit



Specifications, descriptions, and dimensional data are subject to correction or change without notice or incurring obligation.

PART NO.	A	B	C	D	E	F	G	H	I	J	K	L	M	N	O	P
*32XA24F61	5.50	6.00	6.00	1.50	3.38	5.00	0.88	2.50	4.75	3.00	0.50	1.13	4.88	5.50	5.50	3.43
*32XA24F61M	[139.7]	[152.4]	[152.4]	[38.1]	[85.7]	[127.0]	[22.2]	[63.5]	[120.7]	[76.2]	[12.7]	[28.6]	[123.8]	[139.7]	[139.7]	[87.2]
*32XB24F61	5.50	6.00	6.00	3.43	--	5.00	1.50	2.50	4.75	3.00	0.50	1.13	4.88	5.50	5.50	3.43
*32XB24F61M	[139.7]	[152.4]	[152.4]	[87.2]	--	[127.0]	[38.1]	[63.5]	[120.7]	[76.2]	[12.7]	[28.6]	[123.8]	[139.7]	[139.7]	[87.2]
D32XA24F62	5.50	6.00	6.00	1.50	3.38	5.00	0.88	2.50	4.75	3.00	0.50	1.13	4.88	5.50	5.50	3.43
D32XA24F62M	[139.7]	[152.4]	[152.4]	[38.1]	[85.7]	[127.0]	[22.2]	[63.5]	[120.7]	[76.2]	[12.7]	[28.6]	[123.8]	[139.7]	[139.7]	[87.2]
D32XB24F62	5.50	6.00	6.00	3.43	--	5.00	1.50	2.50	4.75	3.00	0.50	1.13	4.88	5.50	5.50	3.43
D32XB24F62M	[139.7]	[152.4]	[152.4]	[87.2]	--	[127.0]	[38.1]	[63.5]	[120.7]	[76.2]	[12.7]	[28.6]	[123.8]	[139.7]	[139.7]	[87.2]
*32XA40F61	5.50	7.00	6.00	1.50	3.38	5.00	1.88	3.50	5.75	3.00	0.50	1.13	5.88	6.50	5.50	3.43
*32XA40F61M	[139.7]	[177.8]	[152.4]	[38.1]	[85.7]	[127.0]	[47.6]	[88.9]	[146.1]	[76.2]	[12.7]	[28.6]	[149.2]	[165.1]	[139.7]	[87.2]
*32XB40F61	5.50	7.00	6.00	3.43	--	5.00	1.50	3.50	5.75	3.00	0.50	1.13	5.88	6.50	5.50	3.43
*32XB40F61M	[139.7]	[177.8]	[152.4]	[87.2]	--	[127.0]	[38.1]	[88.9]	[146.1]	[76.2]	[12.7]	[28.6]	[149.2]	[165.1]	[139.7]	[87.2]
D32XA40F62	6.50	8.00	7.50	2.50	4.38	6.00	2.38	4.00	6.25	3.75	0.63	1.38	6.63	7.38	6.63	4.43
D32XA40F62M	[165.1]	[203.2]	[190.5]	[63.5]	[111.1]	[152.4]	[60.3]	[101.6]	[158.8]	[95.3]	[15.9]	[34.9]	[168.3]	[187.3]	[168.3]	[112.6]
D32XB40F62	6.50	8.00	7.50	4.43	--	6.00	2.50	4.00	6.25	3.75	0.63	1.38	6.63	7.38	6.63	4.43
D32XB40F62M	[165.1]	[203.2]	[190.5]	[112.6]	--	[152.4]	[63.5]	[101.6]	[158.8]	[95.3]	[15.9]	[34.9]	[168.3]	[187.3]	[168.3]	[112.6]

PART NO.	Q	R	S	T	U pilot port size	V valve mounting	W flange mounting	X manifold mounting
*32XA24F61	5.00	3.43	2.50	3.00	SAE #6	0.63 UNC x 1.44 DP	0.50 UNC x 1.19 DP	0.50 UNC x 1.00 DP
*32XA24F61M	[127.0]	[87.2]	[63.5]	[76.2]	ISO 6149 M14	M16 ISO 6H x 36 DP	M12 ISO 6H x 30 DP	M12 ISO 6H x 25 DP
*32XB24F61	5.00	3.43	2.50	3.00	SAE #6	0.63 UNC x 1.44 DP	0.50 UNC x 1.19 DP	0.50 UNC x 1.00 DP
*32XB24F61M	[127.0]	[87.2]	[63.5]	[76.2]	ISO 6149 M14	M16 ISO 6H x 36 DP	M12 ISO 6H x 30 DP	M12 ISO 6H x 25 DP
D32XA24F62	5.00	3.43	2.50	3.00	SAE #6	0.63 UNC x 1.44 DP	0.63 UNC x 1.44 DP	0.50 UNC x 1.00 DP
D32XA24F62M	[127.0]	[87.2]	[63.5]	[76.2]	ISO 6149 M14	M16 ISO 6H x 36 DP	M16 ISO 6H x 36 DP	M12 ISO 6H x 25 DP
D32XB24F62	5.00	3.43	2.50	3.00	SAE #6	0.63 UNC x 1.44 DP	0.63 UNC x 1.44 DP	0.50 UNC x 1.00 DP
D32XB24F62M	[127.0]	[87.2]	[63.5]	[76.2]	ISO 6149 M14	M16 ISO 6H x 36 DP	M16 ISO 6H x 36 DP	M12 ISO 6H x 25 DP
*32XA40F61	5.00	2.88	3.50	3.00	SAE #6	0.63 UNC x 1.44 DP	0.50 UNC x 1.19 DP	0.50 UNC x 1.00 DP
*32XA40F61M	[127.0]	[73.0]	[88.9]	[76.2]	ISO 6149 M14	M16 ISO 6H x 36 DP	M12 ISO 6H x 30 DP	M12 ISO 6H x 25 DP
*32XB40F61	5.00	2.88	3.50	3.00	SAE #6	0.63 UNC x 1.44 DP	0.50 UNC x 1.19 DP	0.50 UNC x 1.00 DP
*32XB40F61M	[127.0]	[73.0]	[88.9]	[76.2]	ISO 6149 M14	M16 ISO 6H x 36 DP	M12 ISO 6H x 30 DP	M12 ISO 6H x 25 DP
D32XA40F62	5.88	3.38	4.00	3.75	SAE #6	0.63 UNC x 1.44 DP	0.88 UNC x 1.88 DP	0.63 UNC x 1.44 DP
D32XA40F62M	[149.2]	[85.7]	[101.6]	[95.3]	ISO 6149 M14	M16 ISO 6H x 36 DP	M22 ISO 6H x 48 DP	M16 ISO 6H x 36 DP
D32XB40F62	5.88	3.38	4.00	3.75	SAE #6	0.63 UNC x 1.44 DP	0.88 UNC x 1.88 DP	0.63 UNC x 1.44 DP
D32XB40F62M	[149.2]	[85.7]	[101.6]	[95.3]	ISO 6149 M14	M16 ISO 6H x 36 DP	M22 ISO 6H x 48 DP	M16 ISO 6H x 36 DP