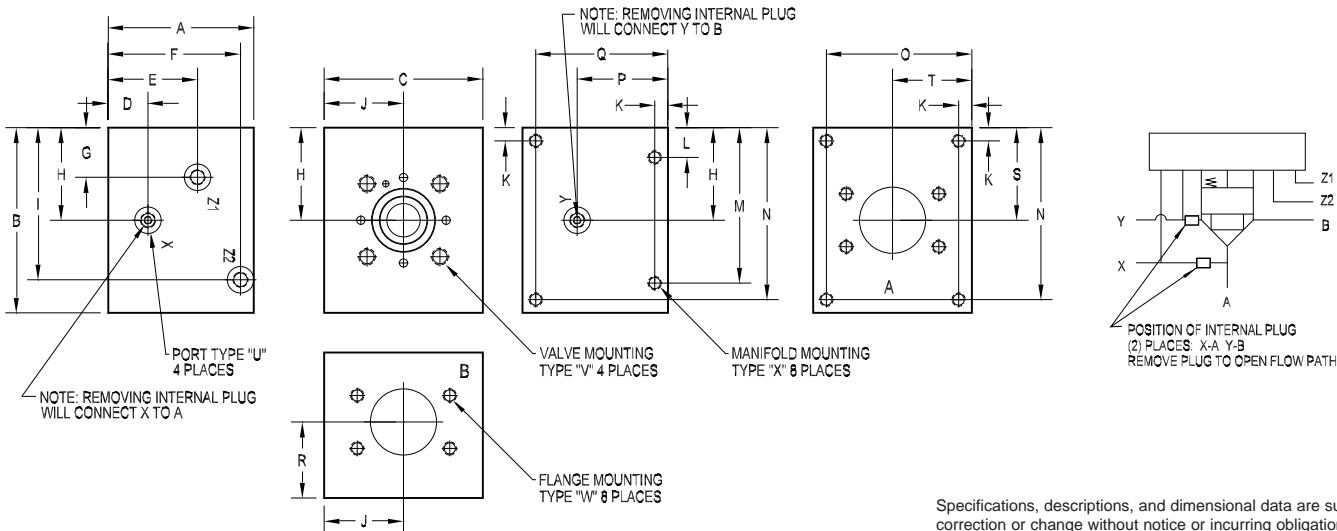




25mm Body • XA Circuit



Specifications, descriptions, and dimensional data are subject to correction or change without notice or incurring obligation.

PART NO.	A	B	C	D	E	F	G	H	I	J	K	L	M	N	O	P
*25XA20F61	4.00	5.00	4.50	0.75	2.13	3.50	0.53	1.88	3.75	2.25	0.38	0.88	4.13	4.63	4.13	2.25
*25XA20F61M	[101.6]	[127.0]	[114.3]	[19.1]	[54.0]	[88.9]	[13.5]	[47.6]	[95.3]	[57.2]	[9.5]	[22.2]	[104.8]	[117.5]	[104.8]	[57.2]
*25XB20F61	4.00	5.00	4.50	2.25	--	3.50	0.75	1.88	3.75	2.25	0.38	0.88	4.13	4.63	4.13	2.25
*25XB20F61M	[101.6]	[127.0]	[114.3]	[57.2]	--	[88.9]	[19.1]	[47.6]	[95.3]	[57.2]	[9.5]	[22.2]	[104.8]	[117.5]	[104.8]	[57.2]
D25XA20F62	4.00	5.00	4.50	0.75	2.13	3.50	0.72	2.06	3.94	2.25	0.38	0.88	4.13	4.63	4.13	2.25
D25XA20F62M	[101.6]	[127.0]	[114.3]	[19.1]	[54.0]	[88.9]	[18.3]	[52.4]	[100.0]	[57.2]	[9.5]	[22.2]	[104.8]	[117.5]	[104.8]	[57.2]
D25XB20F62	4.00	5.00	4.50	2.25	--	3.50	0.75	2.06	3.94	2.25	0.38	0.88	4.13	4.63	4.13	2.25
D25XB20F62M	[101.6]	[127.0]	[114.3]	[57.2]	--	[88.9]	[19.1]	[52.4]	[100.0]	[57.2]	[9.5]	[22.2]	[104.8]	[117.5]	[104.8]	[57.2]
*25XA32F61	5.00	6.00	4.50	1.75	3.13	4.50	1.53	2.88	4.75	2.25	0.50	1.13	4.88	5.50	4.00	3.25
*25XA32F61M	[127.0]	[152.4]	[114.3]	[44.5]	[79.4]	[114.3]	[38.9]	[73.0]	[120.7]	[57.2]	[12.7]	[28.6]	[123.8]	[139.7]	[101.6]	[82.6]
*25XB32F61	5.00	6.00	4.50	3.25	--	4.50	1.75	2.88	4.75	2.25	0.50	1.13	4.88	5.50	4.00	3.25
*25XB32F61M	[127.0]	[152.4]	[114.3]	[82.6]	--	[114.3]	[44.5]	[73.0]	[120.7]	[57.2]	[12.7]	[28.6]	[123.8]	[139.7]	[101.6]	[82.6]
D25XA32F62	5.00	6.50	6.00	1.75	3.13	4.50	1.78	3.13	5.00	3.00	0.50	1.13	5.38	6.00	5.50	3.25
D25XA32F62M	[127.0]	[165.1]	[152.4]	[44.5]	[79.4]	[114.3]	[45.2]	[79.4]	[127.0]	[76.2]	[12.7]	[28.6]	[136.5]	[152.4]	[139.7]	[82.6]
D25XB32F62	5.00	6.50	6.00	3.25	--	4.50	1.75	3.13	5.00	3.00	0.50	1.13	5.38	6.00	5.50	3.25
D25XB32F62M	[101.6]	[165.1]	[152.4]	[82.6]	--	[114.3]	[44.5]	[79.4]	[127.0]	[76.2]	[12.7]	[28.6]	[136.5]	[152.4]	[139.7]	[82.6]

PART NO.	Q	R	S	T	U pilot port size	V valve mounting	W flange mounting	X manifold mounting
*25XA20F61	3.63	2.25	1.88	2.25	SAE #6	0.50 UNC x 1.19 DP	0.44 UNC x 1.12 DP	0.38 UNC x 1.00 DP
*25XA20F61M	[92.1]	[57.2]	[47.6]	[57.2]	ISO 6149 M14	M12 ISO 6H x 30 DP	M10 ISO 6H x 28 DP	M10 ISO 6H x 25 DP
*25XB20F61	3.63	2.25	1.88	2.25	SAE #6	0.50 UNC x 1.19 DP	0.44 UNC x 1.12 DP	0.38 UNC x 1.00 DP
*25XB20F61M	[92.1]	[57.2]	[47.6]	[57.2]	ISO 6149 M14	M12 ISO 6H x 30 DP	M10 ISO 6H x 28 DP	M10 ISO 6H x 25 DP
D25XA20F62	3.63	2.25	2.06	2.25	SAE #6	0.50 UNC x 1.19 DP	0.50 UNC x 1.19 DP	0.38 UNC x 1.00 DP
D25XA20F62M	[92.1]	[57.2]	[52.4]	[57.2]	ISO 6149 M14	M12 ISO 6H x 30 DP	M12 ISO 6H x 30 DP	M10 ISO 6H x 25 DP
D25XB20F62	3.63	2.25	2.06	2.25	SAE #6	0.50 UNC x 1.19 DP	0.50 UNC x 1.19 DP	0.38 UNC x 1.00 DP
D25XB20F62M	[92.1]	[57.2]	[52.4]	[57.2]	ISO 6149 M14	M12 ISO 6H x 30 DP	M12 ISO 6H x 30 DP	M10 ISO 6H x 25 DP
*25XA32F61	4.50	2.75	2.88	2.25	SAE #6	0.50 UNC x 1.19 DP	0.50 UNC x 1.19 DP	0.50 UNC x 1.00 DP
*25XA32F61M	[114.3]	[69.9]	[73.0]	[57.2]	ISO 6149 M14	M12 ISO 6H x 30 DP	M12 ISO 6H x 30 DP	M12 ISO 6H x 25 DP
*25XB32F61	4.50	2.75	2.88	2.25	SAE #6	0.50 UNC x 1.19 DP	0.50 UNC x 1.19 DP	0.50 UNC x 1.00 DP
*25XB32F61M	[114.3]	[69.9]	[73.0]	[57.2]	ISO 6149 M14	M12 ISO 6H x 30 DP	M12 ISO 6H x 30 DP	M12 ISO 6H x 25 DP
D25XA32F62	4.50	2.75	3.13	3.00	SAE #6	0.50 UNC x 1.19 DP	0.75 UNC x 1.62 DP	0.50 UNC x 1.00 DP
D25XA32F62M	[114.3]	[69.9]	[79.4]	[76.2]	ISO 6149 M14	M12 ISO 6H x 30 DP	M20 ISO 6H x 41 DP	M12 ISO 6H x 25 DP
D25XB32F62	4.50	2.75	3.13	3.00	SAE #6	0.50 UNC x 1.19 DP	0.75 UNC x 1.62 DP	0.50 UNC x 1.00 DP
D25XB32F62M	[114.3]	[69.9]	[79.4]	[76.2]	ISO 6149 M14	M12 ISO 6H x 30 DP	M20 ISO 6H x 41 DP	M12 ISO 6H x 25 DP