



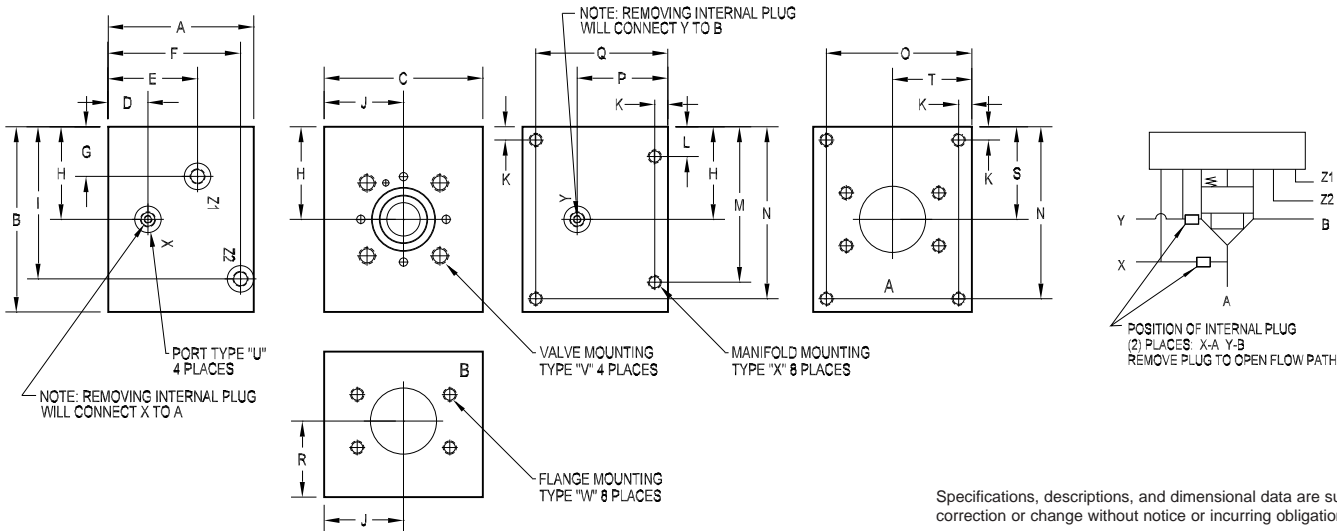
# DIN Cartridge Valve Bodies

(ISO 7368 • DIN 24342 • NFPA T3.5.45 standards)

16mm Body • XA Circuit	Page 126
16mm Body • XB Circuit	Page 127
25mm Body • XA Circuit	Page 128
25mm Body • XB Circuit	Page 129
32mm Body • XA Circuit	Page 130
32mm Body • XB Circuit	Page 131
40mm Body • XA Circuit	Page 132
40mm Body • XB Circuit	Page 133
50mm Body • XA Circuit	Page 134
50mm Body • XB Circuit	Page 135
63mm Body • XA Circuit	Page 136
63mm Body • XB Circuit	Page 137



## 16mm Body • XA Circuit



Specifications, descriptions, and dimensional data are subject to correction or change without notice or incurring obligation.

PART NO.	A	B	C	D	E	F	G	H	I	J	K	L	M	N	O	P
*16XA16F61	3.50	4.00	3.00	1.00	1.56	2.00	0.75	1.63	2.63	1.50	0.31	0.69	3.31	3.69	2.69	2.14
*16XA16F61M	[88.9]	[101.6]	[76.2]	[25.4]	[39.7]	[50.8]	[19.1]	[41.3]	[66.7]	[38.1]	[7.9]	[17.5]	[84.1]	[93.7]	[68.3]	[54.3]
*16XB16F61	3.50	4.00	3.00	2.14	--	2.00	1.00	1.63	2.63	1.50	0.31	0.69	3.31	3.69	2.69	2.14
*16XB16F61M	[88.9]	[101.6]	[76.2]	[54.3]	--	[50.8]	[25.4]	[41.3]	[66.7]	[38.1]	[7.9]	[17.5]	[84.1]	[93.7]	[68.3]	[54.3]
D16XA16F62	3.50	4.25	3.50	1.00	1.56	2.00	0.88	1.88	2.88	1.75	0.31	0.69	3.56	3.94	3.19	2.14
D16XA16F62M	[88.9]	[108.0]	[88.9]	[25.4]	[39.7]	[50.8]	[22.2]	[47.6]	[73.0]	[44.5]	[7.9]	[17.5]	[90.5]	[100.0]	[81.0]	[54.3]
D16XB16F62	3.50	4.25	3.50	2.14	--	2.00	1.00	1.88	2.88	1.75	0.31	0.69	3.56	3.94	3.19	2.14
D16XB16F62M	[88.9]	[108.0]	[88.9]	[54.3]	--	[50.8]	[25.4]	[47.6]	[73.0]	[44.5]	[7.9]	[17.5]	[90.5]	[100.0]	[81.0]	[54.3]
*16XA20F61	3.50	4.00	3.50	1.00	2.14	2.14	0.63	1.63	2.63	1.75	0.31	0.66	3.34	3.69	3.19	2.14
*16XA20F61M	[88.9]	[101.6]	[88.9]	[25.4]	[54.3]	[54.3]	[15.9]	[41.3]	[66.7]	[44.5]	[7.9]	[16.7]	[84.9]	[93.6]	[81.0]	[54.3]
*16XB20F61	3.50	4.00	3.50	2.14	--	2.14	1.00	1.63	2.63	1.75	0.31	0.66	3.34	3.69	3.19	2.14
*16XB20F61M	[88.9]	[101.6]	[88.9]	[54.3]	--	[54.3]	[25.4]	[41.3]	[66.7]	[44.5]	[7.9]	[16.7]	[84.9]	[93.6]	[81.0]	[54.3]
D16XA20F62	4.00	4.50	4.00	1.50	2.64	2.50	1.13	2.13	3.13	2.00	0.38	0.88	3.63	4.13	3.63	2.64
D16XA20F62M	[101.6]	[114.3]	[101.6]	[38.1]	[67.1]	[63.5]	[28.6]	[54.0]	[79.4]	[50.8]	[9.5]	[22.2]	[92.1]	[104.8]	[92.1]	[67.1]
D16XB20F62	4.00	4.50	4.00	2.64	--	2.50	1.50	2.13	3.13	2.00	0.38	0.88	3.63	4.13	3.63	2.64
D16XB20F62M	[101.6]	[114.3]	[101.6]	[67.1]	--	[63.5]	[38.1]	[54.0]	[79.4]	[50.8]	[9.5]	[22.2]	[92.1]	[104.8]	[92.1]	[67.1]

PART NO.	Q	R	S	T	U pilot port size	V valve mounting	W flange mounting	X manifold mounting
*16XA16F61	3.19	2.14	1.63	1.50	SAE #4	0.31 UNC x 0.88 DP	0.38 UNC x 0.88 DP	0.31 UNC x 0.63 DP
*16XA16F61M	[81.0]	[54.3]	[41.3]	[38.1]	ISO 6149 M10	M8 ISO 6H x [22] DP	M10 ISO 6H x [22] DP	M8 ISO 6H x [16] DP
*16XB16F61	3.19	2.14	1.63	1.50	SAE #4	0.31 UNC x 0.88 DP	0.38 UNC x 0.88 DP	0.31 UNC x 0.63 DP
*16XB16F61M	[81.0]	[54.3]	[41.3]	[38.1]	ISO 6149 M10	M8 ISO 6H x [22] DP	M10 ISO 6H x [22] DP	M8 ISO 6H x [16] DP
D16XA16F62	3.19	2.00	1.88	1.75	SAE #4	0.31 UNC x 0.88 DP	0.44 UNC x 1.12 DP	0.31 UNC x 0.63 DP
D16XA16F62M	[81.0]	[50.8]	[47.6]	[44.5]	ISO 6149 M10	M8 ISO 6H x [22] DP	M10 ISO 6H x [28] DP	M8 ISO 6H x [16] DP
D16XB16F62	3.19	2.00	1.88	1.75	SAE #4	0.31 UNC x 0.88 DP	0.44 UNC x 1.12 DP	0.31 UNC x 0.63 DP
D16XB16F62M	[81.0]	[50.8]	[47.6]	[44.5]	ISO 6149 M10	M8 ISO 6H x [22] DP	M10 ISO 6H x [28] DP	M8 ISO 6H x [16] DP
*16XA20F61	3.19	2.14	1.67	1.75	SAE #4	0.31 UNC x 0.88 DP	0.44 UNC x 1.12 DP	0.31 UNC x 0.63 DP
*16XA20F61M	[81.0]	[54.3]	[42.5]	[44.5]	ISO 6149 M10	M8 ISO 6H x [22] DP	M10 ISO 6H x [28] DP	M8 ISO 6H x [16] DP
*16XB20F61	3.19	2.14	1.67	1.75	SAE #4	0.31 UNC x 0.88 DP	0.44 UNC x 1.12 DP	0.31 UNC x 0.63 DP
*16XB20F61M	[81.0]	[54.3]	[42.5]	[44.5]	ISO 6149 M10	M8 ISO 6H x [22] DP	M10 ISO 6H x [28] DP	M8 ISO 6H x [16] DP
D16XA20F62	3.63	2.47	2.13	2.00	SAE #4	0.31 UNC x 0.88 DP	0.50 UNC x 1.19 DP	0.38 UNC x 1.00 DP
D16XA20F62M	[92.1]	[62.7]	[54.0]	[50.8]	ISO 6149 M10	M8 ISO 6H x [22] DP	M12 ISO 6H x [30] DP	M10 ISO 6H x [25] DP
D16XB20F62	3.63	2.47	2.13	2.00	SAE #4	0.31 UNC x 0.88 DP	0.50 UNC x 1.19 DP	0.38 UNC x 1.00 DP
D16XB20F62M	[92.1]	[62.7]	[54.0]	[50.8]	ISO 6149 M10	M8 ISO 6H x [22] DP	M12 ISO 6H x [30] DP	M10 ISO 6H x [25] DP